



**SMALL KEYED QUARTER TURN LOCKS**

**DESCRIPTION**

For easy and secure latching and locking of doors and flaps.  
Wide range of inserts, cams, and accessories.  
Key code 2233

**MATERIAL**

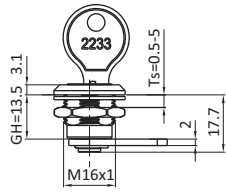
Die-cast zinc

**SURFACE**

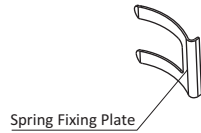
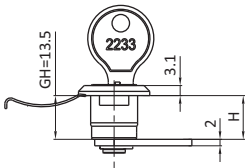
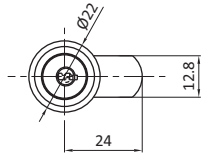
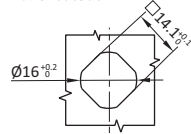
Black powder coated / chrome plated

**SPECIALS**

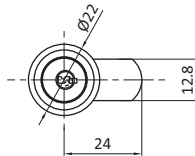
Key code FH2233



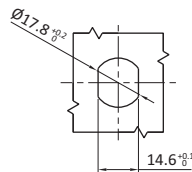
Panel Cutout



Spring Fixing Plate

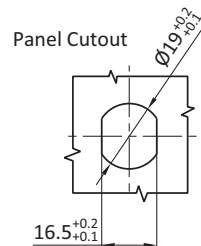
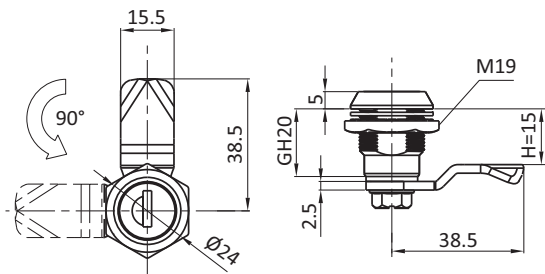


Panel Cutout B



**Quarter Turn Locks**

	Nut Mounting	Nut Mounting	Spring Mounting	Spring Mounting
H Dimension	Black Powder Coated	Bright Chrome Plated	Black Powder Coated	Bright Chrome Plated
13.5mm	<b>SKQTL254</b>	<b>SKQTL255</b>	<b>SKQTL256</b>	<b>SKQTL257</b>
19.5mm	<b>SKQTL258</b>	<b>SKQTL259</b>	<b>SKQTL260</b>	<b>SKQTL261</b>



**Quarter Turn Locks**

Key locking

Die-cast Zinc,  
black powder coated

**SKQTL714**

Die-cast Zinc,  
chrome plated

**SKQTL715**

Keyed different on request  
FH751 key code on request