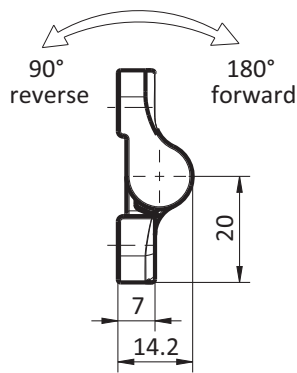
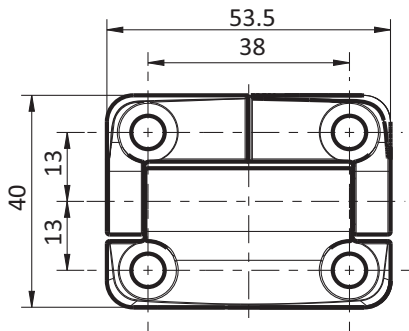
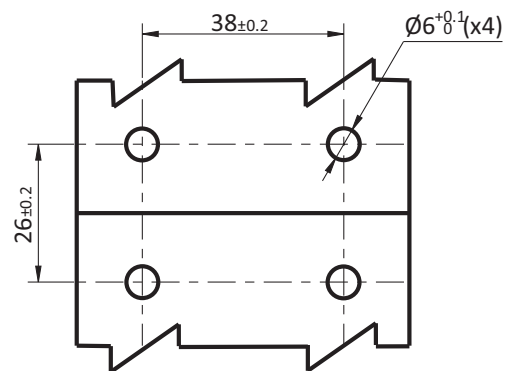


**FRICTION HINGES**

DESCRIPTION	To hinge panels
MATERIAL	Hinge leaves: Die cast zinc Pin: SS
SURFACE	Black powder coated
SPECIALS	Life: Within 20 percent of stated torque after 25,000 cycles



Panel cutout



## Screw-On Torque Hinge

	Torque to open Nm(INLB)	Torque to close Nm(INLB)	Black Powder Coat
Symetric Torque	1.2 (10.6)	1.2 (10.6)	<b>FHSTB114</b>
	1.8 (16.0)	1.8 (16.0)	<b>FHSTB115</b>
	2.3 (20.4)	2.3 (20.4)	<b>FHSTB116</b>
	3.4 (30.1)	3.4 (30.1)	<b>FHSTB117</b>
	4.5 (39.8)	4.5 (39.8)	<b>FHSTB118</b>
Asymetric Torque	2.3 (20.4)	1.4 (12.4)	<b>FHATB119</b>
	3.4 (30.1)	2.0 (17.7)	<b>FHATB120</b>
	4.5 (39.8)	2.7 (23.9)	<b>FHATB121</b>
	1.4 (12.4)	2.3 (20.4)	<b>FHATB122</b>
	2.0 (17.7)	3.4 (30.1)	<b>FHATB123</b>
	2.7 (23.9)	4.5 (39.8)	<b>FHATB124</b>