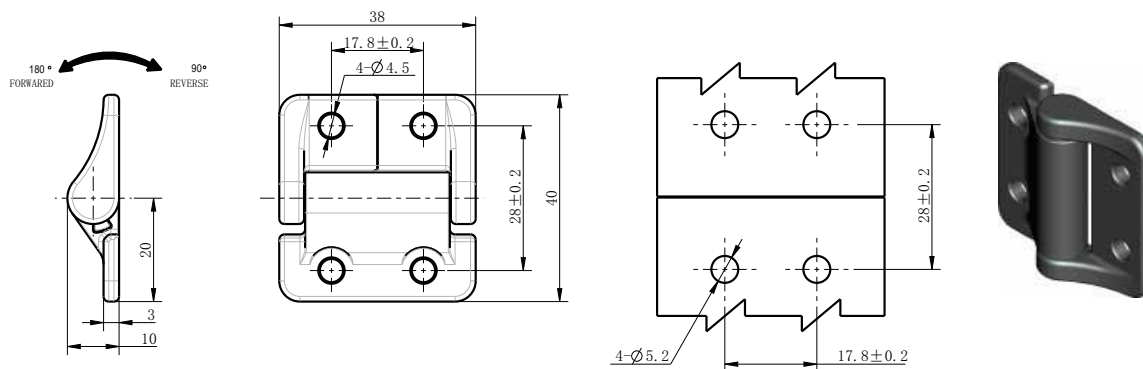


**FRICTION HINGES**

DESCRIPTION	To hinge panels
MATERIAL	Hinge leaves: Die cast zinc Pin: SS
SURFACE	Black powder coated / chrome plated
SPECIALS	Life: Within 20 percent of stated torque after 25,000 cycles



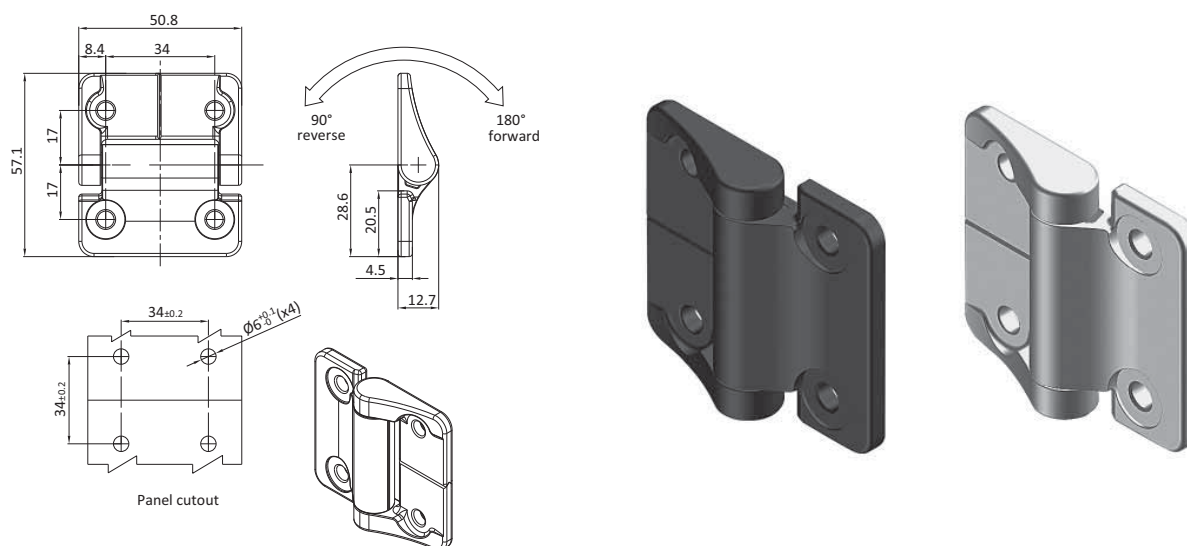
Screw-On Torque Hinge

Symmetric Torque Nm (IN-LB)

Black Powder Coat

**Free Operating**

0.9 [8.0]	<b>FHB225</b>
1.4 [12.4]	<b>FHB226</b>
1.8 [16.0]	<b>FHB227</b>
1.8 [16.0]	<b>FHB228</b>
2.3 [20.4]	<b>FHB229</b>



Screw-On Torque Hinge

Torque to open Nm(INLB)

Torque to close Nm(INLB)

Black Powder Coat

Natural

Symmetric Torque	1.8 [16.0]	1.8 [16.0]	<b>FHSTB326</b>	<b>FHSTW327</b>
	2.3 [20.4]	2.3 [20.4]	<b>FHSTB328</b>	<b>FHSTW329</b>
	3.4 [30.1]	3.4 [30.1]	<b>FHSTB281</b>	<b>FHSTW282</b>
Asymmetric Torque	2.3 [20.4]	1.4 [12.4]	<b>FHATB330</b>	
	3.4 [30.1]	2.0 [17.7]	<b>FHATB332</b>	
	4.5 [39.8]	2.7 [23.9]	<b>FHATB334</b>	
	1.4 [12.4]	2.3 [20.4]	<b>FHATB336</b>	
	2.7 [23.9]	2.7 [23.9]	<b>FHATB340</b>	