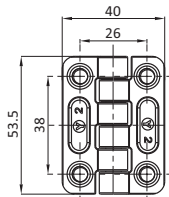
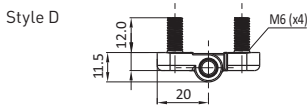
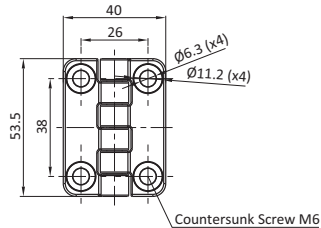
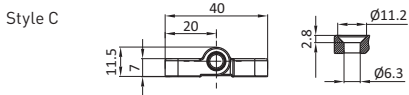
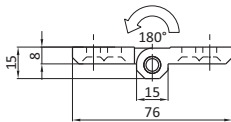
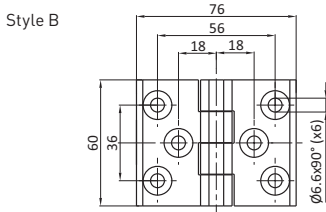
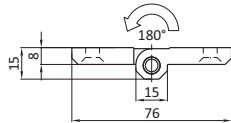
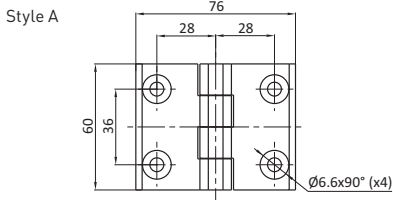
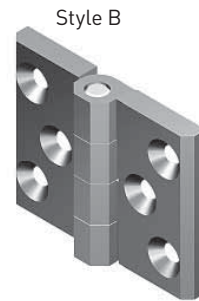
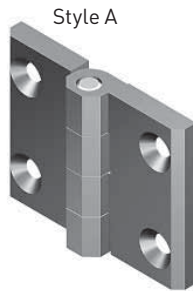


SCREW ON HINGES


DESCRIPTION	To hinge panels
MATERIAL	Hinge leaves: Die-cast zinc Hinge pin: Mild steel
SURFACE	Hinge leaves: Black powder coated / chrome plated Hinge pin: 304 Stainless Steel
SPECIALS	Non lift off



	Version	Black Powder Coated	Chrome Plated
Style A	4 M6 countersunk screw holes	SOHBA3	SOHCA7
Style B	6 M6 countersunk screw holes	SOHBB8	SOHCB8S01
Style C	4 M6 countersunk screw holes	SOHBC5	SOHCC9
Style D	4 M6 threaded studs	SOHBD6	SOHCD10