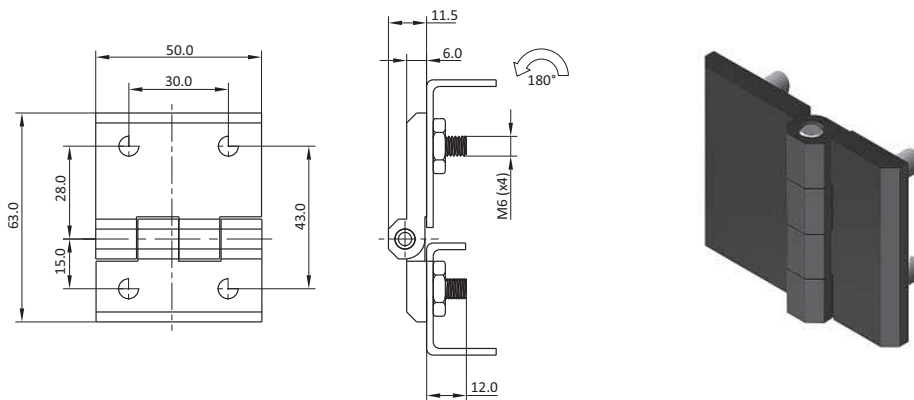
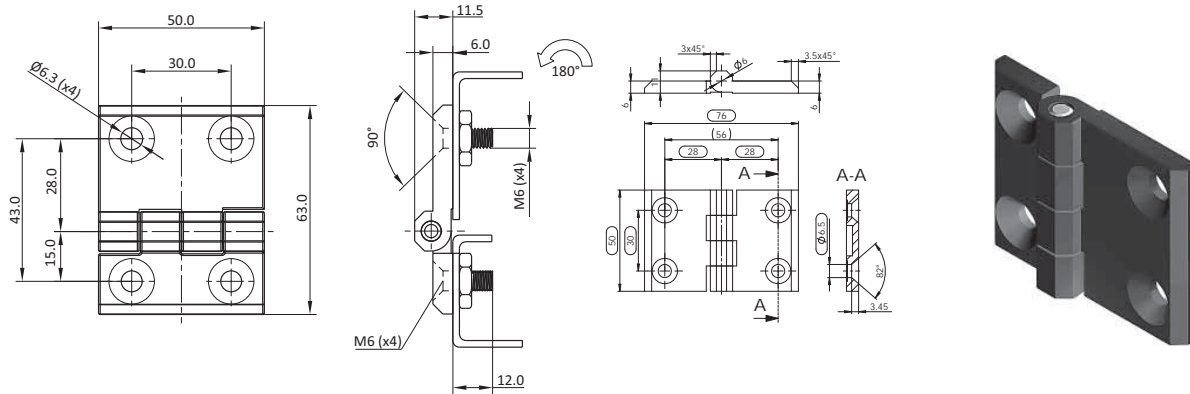


SCREW-ON HINGES

DESCRIPTION	To hinge panels
MATERIAL	Hinge leaves: Die-cast zinc Hinge pin: Mild steel
SURFACE	Hinge leaves: Black powder coated / chrome plated Hinge pin: 304 Stainless Steel
SPECIALS	Non lift off Left and right



Version

Black Powder Coated

Chrome Plated

SS 316

Countersunk Screw M6

SOHB10
SOHC10S01
SOHSS3

Threaded M6 Studs

SOHB286
SOHC288