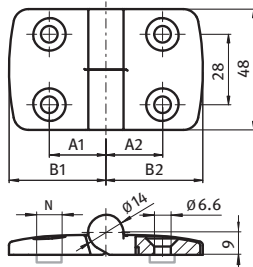


PLASTIC COMBI HINGES

DESCRIPTION	To hinge panels
MATERIAL	Hinge leaves: Nylon PA, glass fiber reinforced Hinge pin: Stainless steel
COLOR	Black



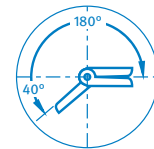
Asymmetric hinges available on request



Non Lift Off



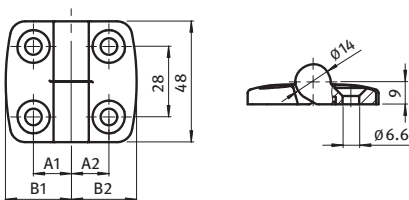
Lift Off



Plastic Combi Hinges	A1 [mm]	A2[mm]	B1[mm]	B2 [mm]	Left Hand	Right Hand	Non-Lift Off
	15.0	15.0	26.0	26.0	PCH25L00	PCH25R00	PCH25F00
	17.5	17.5	29.5	29.5	PCH30L00	PCH30R00	PCH30F00
	20.0	20.0	36.0	36.0	PCH35L00	PCH35R00	PCH35F00
	22.5	22.5	38.5	38.5	PCH40L00	PCH40R00	PCH40F00
	25.0	25.0	43.5	43.5	PCH45L00	PCH45R00	PCH45F00
	27.5	27.5	48.5	48.5	PCH50L00	PCH50R00	PCH50F00
	32.5	32.5	57.5	57.5	PCH60L00	PCH60R00	PCH60F00

ALUMINUM COMBI HINGES

DESCRIPTION	To hinge panels
MATERIAL	Hinge leaves: Die-cast aluminum Hinge pin: Stainless steel
SURFACE	Alu color lacquered



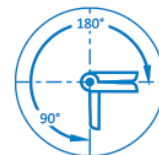
Asymmetric hinges available on request



Non Lift Off



Lift Off



Aluminum Combi Hinges	A1 [mm]	A2 [mm]	B1 [mm]	B2 [mm]	Left Hand	Right Hand	Non-Lift Off
	15.0	15.0	26.0	26.0	ACH25L	ACH25R	ACH25F
	17.5	17.5	29.5	29.5	ACH30L	ACH30R	ACH30F
	20.0	20.0	36.0	36.0	ACH35L	ACH35R	ACH35F
	22.5	22.5	38.5	38.5	ACH40L	ACH40R	ACH40F
	25.0	25.0	43.5	43.5	ACH45L	ACH45R	ACH45F
	27.5	27.5	48.5	48.5	ACH50L	ACH50R	ACH50F
	32.5	32.5	57.5	57.5	ACH60L	ACH60R	ACH60F