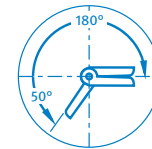
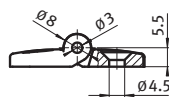
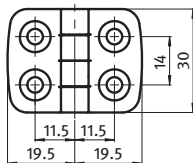


**PLASTIC HINGE 20**

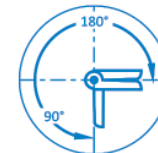
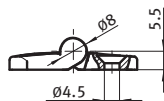
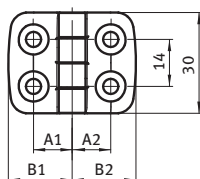
DESCRIPTION	To hinge panels or aluminum profiles
MATERIAL	Wings: Nylon PA, glass fiber reinforced; Cast Aluminum Bolt: Stainless steel
COLOR	Black
FASTENING	From the front, using M4 countersunk screws
SPECIALS	? electrostatically conductive, further colors, fixing pins for installation on aluminum profiles available on request



Material	FA max [N]	FR max [N]	Part #
PA 30	200	400	<b>PH20F00</b>
Aluminum	215	275	<b>PH2020F</b>

**STAINLESS STEEL COMBI HINGE 20**

DESCRIPTION	To hinge panels
MATERIAL	Wing: Stainless steel SS316 Bolt: Stainless steel SS430 F
SURFACE	Polished
FASTENING	From the front, using M4 countersunk screws



Stainless Steel Combi Hinge 20	A1 [mm]	A2 [mm]	B1 [mm]	B2 [mm]	Fmax [N]	FRmax [N]	Part #
	11.5	11.5	19.0	19.0	450	700	<b>SSCH2020F</b>