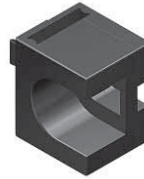
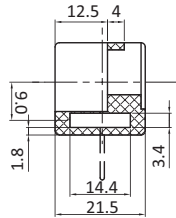
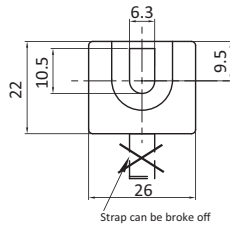
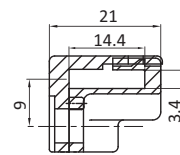
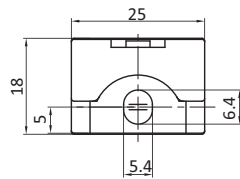
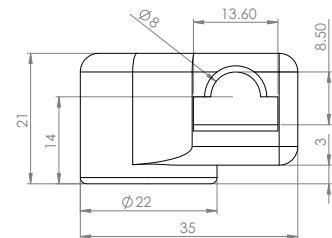
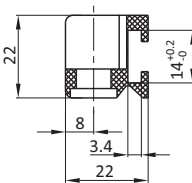
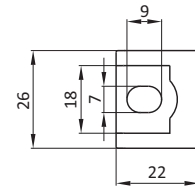


ROD GUIDES

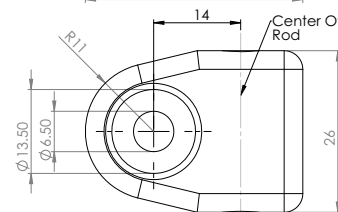
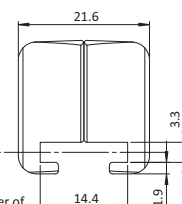
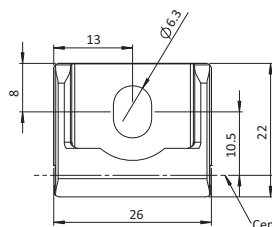
| | |
|-------------|--|
| DESCRIPTION | To guide flat rods parallel to a door and add extra security to door latching and locking. |
| MATERIAL | PA, Die Cast Zinc |
| COLOR | Black |

 Version A
 For weld stud M6x16
 or M6x20

 Version B
 For weld stud M5x12


Version C

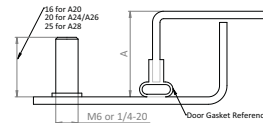
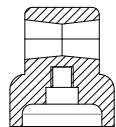
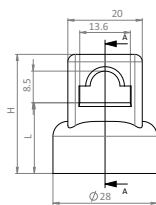


Version D



Version F

Version E



| Version | Material | A [mm] | H [mm] | L [mm] | Stud Size | Flat Rod | Round Rod # |
|-----------|---------------|--------|--------|--------|--------------|--------------|------------------|
| Version A | PA6 30 | | | | M6 x 16 | RG32 | |
| Version B | PA6 30 | | | | M5 x 16 | RG33 | |
| Version C | PA6 30 | | | | M6 x 16 | RG251 | |
| Version D | Die Cast Zinc | | | | M6 x 16 | RG182 | |
| Version E | PA6 30 | A20 | 32 | 20 | M6 x 16 | | RG31501 |
| | PA6 30 | A26 | 38 | 25 | 1/4 - 20 UNC | | RG129CP01 |
| | PA6 30 | A34 | 44 | 30 | M6 x 16 | | RG31 |
| Version F | PA6 30 | | | | M6 | | RG129S01 |