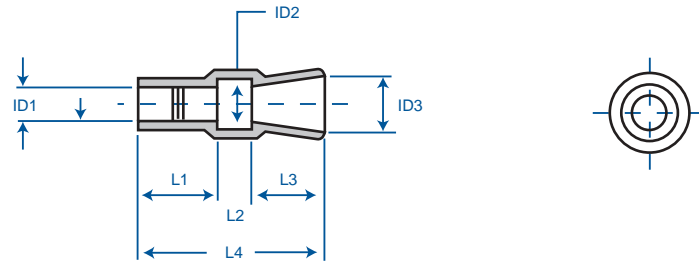


42 SERIES

- Round type insulating sleeve for pin plug
- For .197 (5.0mm) diameter series
- No corrosion when exposed to copper
- UL temperature rating: 105°C
- CSA temperature rating: 90°C
- UL voltage: 600V
- CSA voltage: 600V



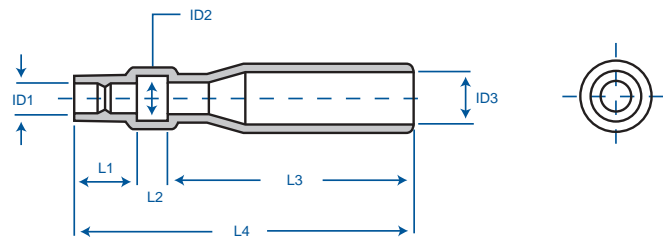
ITEM NO. 10-42-Series	
COLOR:	Transparent Blue*
*Other colors available; inquiries welcome	
PACKAGING:	1000/bag
MATERIAL:	Soft PVC

MATERIAL	PRODUCT
UL YELLOW CARD FILE #: E58538(S)	E55167(S)
CSA #:	LR52853 & LR52854

ITEM NO.	ID1	ID2	ID3	L1	L2	L3	L4
	inches (mm)	inches (mm)	inches (mm)	inches (mm)	inches (mm)	inches (mm)	inches (mm)
10-42-222	.087 (2.2)	.177 (4.5)		.276 (7.0)			.551 (14.0)
10-42-225	.098 (2.5)	.158 (4.0)		.236 (6.0)			.512 (13.0)
10-42-228	.110 (2.8)	.177 (4.5)		.276 (7.0)			.551 (14.0)
10-42-230	.118 (3.0)	.158 (4.0)	.197 (5.0)	.236 (6.0)	.098 (2.5)	.177 (4.5)	.512 (13.0)
10-42-232	.126 (3.2)			.276 (7.0)			.551 (14.0)
10-42-235	.138 (3.5)	.177 (4.5)		.236 (6.0)			.512 (13.0)
10-42-240	.158 (4.0)			.236 (6.0)			.512 (13.0)
Tolerance ±				.039 (1.0)		.039 (1.0)	

44 SERIES

- Round type insulating sleeve for pin receptacle
- For .197 (5.0mm) diameter series
- No corrosion when exposed to copper
- UL temperature rating: 105°C
- CSA temperature rating: 90°C
- UL voltage: 600V
- CSA voltage: 600V



ITEM NO. 10-44-Series	
COLOR:	Transparent Blue*
*Other colors available; inquiries welcome	
PACKAGING:	1000/bag
MATERIAL:	Soft PVC

MATERIAL	PRODUCT
UL YELLOW CARD FILE #: E58538(S)	E55167(S)
CSA #:	LR52853 & LR52854

ITEM NO.	ID1	ID2	ID3	L1	L2	L3	L4
	inches (mm)	inches (mm)	inches (mm)	inches (mm)	inches (mm)	inches (mm)	inches (mm)
10-44-025	.098 (2.5)	.158 (4.0)					
10-44-028	.110 (2.8)			.236 (6.0)			1.30 (33.0)
10-44-030	.118 (3.0)	.177 (4.5)					
10-44-032	.126 (3.2)		.197 (5.0)	.278 (7.0)	.098 (2.5)	.965 (24.5)	1.34 (34.0)
10-44-035	.138 (3.5)	.158 (4.0)		.236 (6.0)			1.30 (33.0)
10-44-040	.158 (4.0)	.177 (4.5)					
Tolerance ±				.039 (.1)		.039 (.1)	