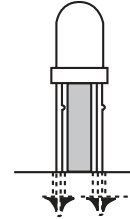
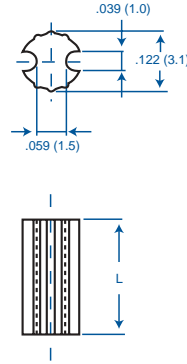


00 SERIES

- For .118 (3.0mm) LED
- Chemical and heat resistant
- Spaces and insulates leads
- Material: UL94V-0 (E58608)



<b>ITEM NO.</b> 09-00-Series	
<b>COLOR:</b>	Black
<b>PACKAGING:</b>	1000/bag
<b>MATERIAL:</b>	Olefin Elastomers

ITEM NO.	L	
	inches	(mm)
09-00-20	.079	(2.0)
09-00-30	.118	(3.0)
09-00-40	.158	(4.0)
09-00-50	.197	(5.0)
09-00-60	.236	(6.0)
09-00-70	.276	(7.0)
09-00-80	.315	(8.0)
09-00-90	.354	(9.0)
09-00-100	.394	(10.0)
09-00-120	.472	(12.0)
09-00-150	.591	(15.0)
Tolerance ±	.004	(.1)

01 SERIES

- For two color LED's
- Chemical and heat resistant
- Spaces and insulates leads
- Two mounting methods; via oval center hole (see figure 1) or via outside slits (see figure 2)
- Material: UL94V-0 (E58608)

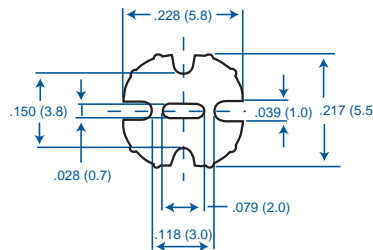
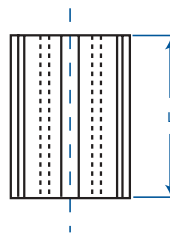
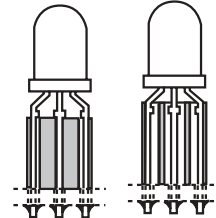


FIGURE 1

FIGURE 2



<b>ITEM NO.</b> 09-01-Series	
<b>COLOR:</b>	Black
<b>PACKAGING:</b>	1000/bag
<b>MATERIAL:</b>	Olefin Elastomers

ITEM NO.	L		Mounting Method	Mounting Method		
	inches	(mm)				
09-01-20	.079	(2.0)	See Figure 1	See Figure 2		
09-01-30	.118	(3.0)				
09-01-40	.158	(4.0)				
09-01-50	.197	(5.0)				
09-01-60	.236	(6.0)				
09-01-70	.276	(7.0)				
09-01-80	.315	(8.0)				
09-01-90	.354	(9.0)				
09-01-100	.394	(10.0)				
09-01-120	.472	(12.0)				
09-01-150	.591	(15.0)				
Tolerance ±	.004	(.1)				