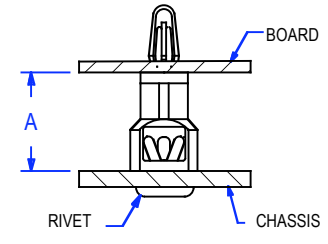
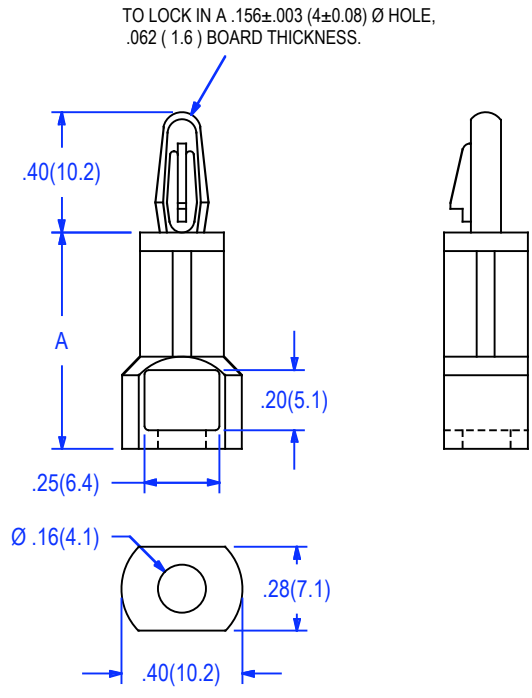


01-61 SERIES



ITEM NO.	DIM. A	
	Inches	mm
01-61-60	.375	9.5
01-61-70	.437	11.1
01-61-80	.500	12.7
01-61-100	.625	15.9
01-61-120	.750	19.1
01-61-140	.875	22.2
01-61-160	1.0	25.4

CHASSIS THICKNESS RANGE		USE AEH RIVET NO.
Inches	mm	
.026 - .062	0.7 - 1.6	06-01-4050
.062 - .105	1.5 - 2.7	06-01-4060
.105 - .145	2.7 - 3.7	06-01-4070
.145 - .184	3.7 - 4.7	06-01-4080
.184 - .223	4.7 - 5.7	06-01-4090
.223 - .263	5.7 - 6.7	06-01-4100
.282 - .341	7.2 - 8.7	06-01-4120

PCB SUPPORT MATERIAL	
MATERIAL	NYLON 66
UL RATING	94V-2
UL FILE NO.	E41938
COLOR	NATURAL
ASTM	D 4066, PA111
RoHS COMPLIANCE	YES
TEMPERATURE RANGE (REF.)	-40 to 185°F (-40 to 85°C)
MR NUMBER	12

RIVETS MATERIAL	
MATERIAL	NYLON 6
UL RATING	94V-2
UL FILE NO.	E41871
COLOR	BLACK
RoHS COMPLIANCE	YES
TEMPERATURE RANGE (REF.)	-40 to 185°F (-40 to 85°C)
MR NUMBER	31

- NOTES:
1. CHASSIS HOLE DIA.= .161 (4 TO 4.1)
  2. V-O RATED MATERIAL AVAILABLE ON REQUEST. TO ORDER ADD SUFFIX "X" TO ITEM NO.
  3. PACKAGING: 1000 / BAG

				BY	DATE	Title			
				CUSTOMER APPROVAL		<b>PCB SUPPORT, RIVET MOUNT</b>			
				VERIFIED		Part No.	Issue		
				REVIEWED	FL			01-61 SERIES	A
				DRAWN	FL				
				DIMENSIONS		Inches (mm)	Tolerance .xx = ± .010 .xxx = .005		
.A	Added board mounting hole note.	04-16-09	FL	ALL ELECTRONICS HARDWARE INC. 2642 Corporate Parkway Algonquin, IL. 60102 1-800-778-7234			Drwg. type CATALOG	04/16/09	
No	Revision	Date	Init.				File No. 0161SERIES		